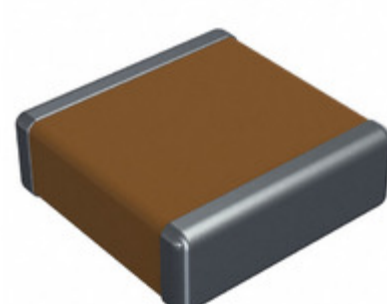


2225PC105KAT1A



Part Number: [2225PC105KAT1A](#)
Manufacturer: [AVX Corporation](#)
Description: CAP CER 1UF 250V X7R 2225
Data sheet: [Tip & Ring MLCC Series Datasheet](#)

RoHS Status: Lead free / RoHS Compliant
Ship From: Hong Kong
Shipment Way: DHL/Fedex/TNT/UPS/EMS

Images are for reference only.
 See Product Specifications for product details.
 Buy 2225PC105KAT1A with confidence from
 Component-World.HK, 1 Year Warranty

[Request For Quotation](#)

PRODUCT PARAMETER

Part Number	2225PC105KAT1A	Manufacturer	AVX Corporation
Description	CAP CER 1UF 250V X7R 2225	Lead Free Status / RoHS Status	Lead free / RoHS Compliant
Quantity Available	83971 pcs	Data sheet	Tip & Ring MLCC Series Datasheet
Category	Capacitors	Voltage - Rated	250V
Tolerance	±10%	Thickness (Max)	0.079" (2.00mm)
Temperature Coefficient	X7R	Size / Dimension	0.225" L x 0.250" W (5.72mm x 6.35mm)
Series	-	Ratings	-
Packaging	Original-Reel®	Package / Case	2225 (5763 Metric)
Other Names	478-3993-6	Operating Temperature	-55°C ~ 125°C
Mounting Type	Surface Mount, MLCC	Moisture Sensitivity Level (MSL)	1 (Unlimited)
Manufacturer Standard Lead Time	20 Weeks	Lead Style	-
Lead Spacing	-	Lead Free Status / RoHS Status	Lead free / RoHS Compliant
Height - Seated (Max)	-	Features	-
Detailed Description	1µF ±10% 250V Ceramic Capacitor X7R 2225 (5763 Metric)	Capacitance	1µF
Applications	General Purpose		

Component-World.com is a Reliable Stocking Distributor of Electronic Components. We specialize in all AVX Corporation series electronic components. We have 83971 pieces of AVX Corporation 2225PC105KAT1A in stock available now. Request a quote from electronics components distributor at Component-World.com, our sales team will contact you within 24 hours.

RFQ Email: info@Components-World.com

RELATED PRODUCTS

	Part#: 2225JA470JAT1A Description: CAP CER 47PF 4KV NP0 2225	Manufacturers: AVX Corporation	RFQ
	Part#: 2225PC125MAT1A Description: CAP CER 1.2UF 250V X7R 2225	Manufacturers: AVX Corporation	RFQ
	Part#: 2225JC221KAT1A Description: CAP CER 220PF 4KV X7R 2225	Manufacturers: AVX Corporation	RFQ
	Part#: 2225JA560JAT1A1S1B Description: CAP CER 56PF 4KV C0G/NP0 2225	Manufacturers: AVX Corporation	RFQ
	Part#: 2225PC125KAT1A Description: CAP CER 1.2UF 250V X7R 2225	Manufacturers: AVX Corporation	RFQ
	Part#: 2225PC564MAT1A Description: CAP CER 0.56UF 250V X7R 2225	Manufacturers: AVX Corporation	RFQ
	Part#: 2225PC474MAT1A Description: CAP CER 0.47UF 250V X7R 2225	Manufacturers: AVX Corporation	RFQ
	Part#: 2225JC101KAT1A1S1B Description: CAP CER 100PF 4KV X7R 2225	Manufacturers: AVX Corporation	RFQ
	Part#: 2225JA560JAT9A Description: CAP CER 56PF 4KV C0G/NP0 2225	Manufacturers: AVX Corporation	RFQ
	Part#: 2225PC105KAT2A Description: CAP CER 1UF 250V X7R 2225	Manufacturers: AVX Corporation	RFQ
	Part#: 2225JA680JAT1A Description: CAP CER 68PF 4KV NP0 2225	Manufacturers: AVX Corporation	RFQ
	Part#: 2225PC684MAT1A Description: CAP CER 0.68UF 250V X7R 2225	Manufacturers: AVX Corporation	RFQ
	Part#: 2225JC151KAT1A Description: CAP CER 150PF 4KV X7R 2225	Manufacturers: AVX Corporation	RFQ
	Part#: 2225N151K302NT Description: CAP CER 150PF 3KV C0G/NP0 2225	Manufacturers: Knowles NOVACAP	RFQ
	Part#: 2225PC564KAT1A Description: CAP CER 0.56UF 250V X7R 2225	Manufacturers: AVX Corporation	RFQ
	Part#: 2225PC474KAT1A Description: CAP CER 0.47UF 250V X7R 2225	Manufacturers: AVX Corporation	RFQ
	Part#: 2225PC684KAT1A Description: CAP CER 0.68UF 250V X7R 2225	Manufacturers: AVX Corporation	RFQ
	Part#: 2225JA271KAT9A Description: CAP CER 270PF 4KV C0G/NP0 2225	Manufacturers: AVX Corporation	RFQ
	Part#: 2225JA560JAT1A Description: CAP CER 56PF 4KV C0G/NP0 2225	Manufacturers: AVX Corporation	RFQ
	Part#: 2225PC105MAT1A Description: CAP CER 1UF 250V X7R 2225	Manufacturers: AVX Corporation	RFQ

Related keywords for 2225PC105KAT1A

AVX Corporation 2225PC105KAT1A	2225PC105KAT1A distributor	2225PC105KAT1A supplier	2225PC105KAT1A price
2225PC105KAT1A download datasheet	2225PC105KAT1A datasheet	2225PC105KAT1A stock	buy 2225PC105KAT1A
AVX Corporation 2225PC105KAT1A	AVX Corporation [MIL] 2225PC105KAT1A		